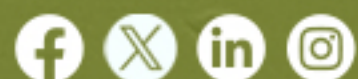


FOLLOW US NOW



Bell Power Trim Series — Precision Meets Performance

Experience the next generation of trimming technology with the Bell Power Trim Series, a complete range of professional hedge trimmers designed for reliability, balance, and power.

Visit Our Website
www.belltowercn.com



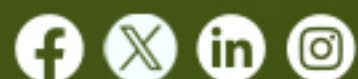
CONTACT US



Call for product details

+86 182 2087 1721

FOLLOW US NOW



Double Blade Hedge Trimmer | 24 V Brushless Motor

Bell-001-HT

MOQ 100 , 500 , 1000 . Lead time 40 days

Bring power and precision together.

The Bell-001-HT Hedge Trimmer delivers smooth, accurate trimming with its 600 mm dual-action blade and 24 V brushless motor for quieter operation and longer life. Lightweight at just 2.35 kg, it's designed for effortless handling in gardens and landscaping jobs.

24 V brushless motor | low noise, long life

600 mm cutting length | clean, balanced performance

Ergonomic handle | comfortable grip for long sessions

Battery options 8 Ah–20 Ah | runtime up to 8 h

Available colors



Ideal for distributors and professionals looking for a proven, export-ready model that blends durability, lightness, and easy service.



Visit Our Website

www.belltowercn.com



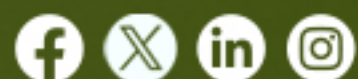
CONTACT US



Call for product details

+86 182 2087 1721

FOLLOW US NOW



Cordless Hedge Trimmer | 24 V Brushless Motor

Bell-002-HT

MOQ 100 , 500 , 1000 . Lead time 40 days

Compact yet mighty.

The Bell-002-HT Cordless Hedge Trimmer is your everyday partner for shaping hedges, shrubs, and borders. A 24 V brushless motor powers its 300 mm cutting blade with strong torque and steady control while keeping vibration low.

Lightweight 1.2 kg body |
easy one-hand use

24 V brushless motor |
efficient and quiet

Adjustable handle | precision
for tight spaces

Battery options 8 Ah–20 Ah |
up to 10 h runtime

Fast charging | 2 – 6 hours

Perfect for retail sets and wholesale gardening lines seeking a versatile, entry-level model that still feels premium in the hand.



Visit Our Website

www.belltowercn.com



CONTACT US

Call for product details



+86 182 2087 1721

FOLLOW US NOW



Single Blade HedgeTrimmer | 24 V / 48 V Brushless Motor

Bell-004-HT

MOQ 100 , 500 , 1000 . Lead time 40 days

Reach higher, cut cleaner.

The Bell-004-HT Single Blade Trimmer is designed for demanding trimming work. Its long 750 mm blade and 24 V / 48 V brushless motor deliver precise, extended cutting with minimal vibration—perfect for tall hedges and dense growth.

24 V / 48 V brushless motor |
extra torque & efficiency

750 mm blade | maximum
reach for large hedges

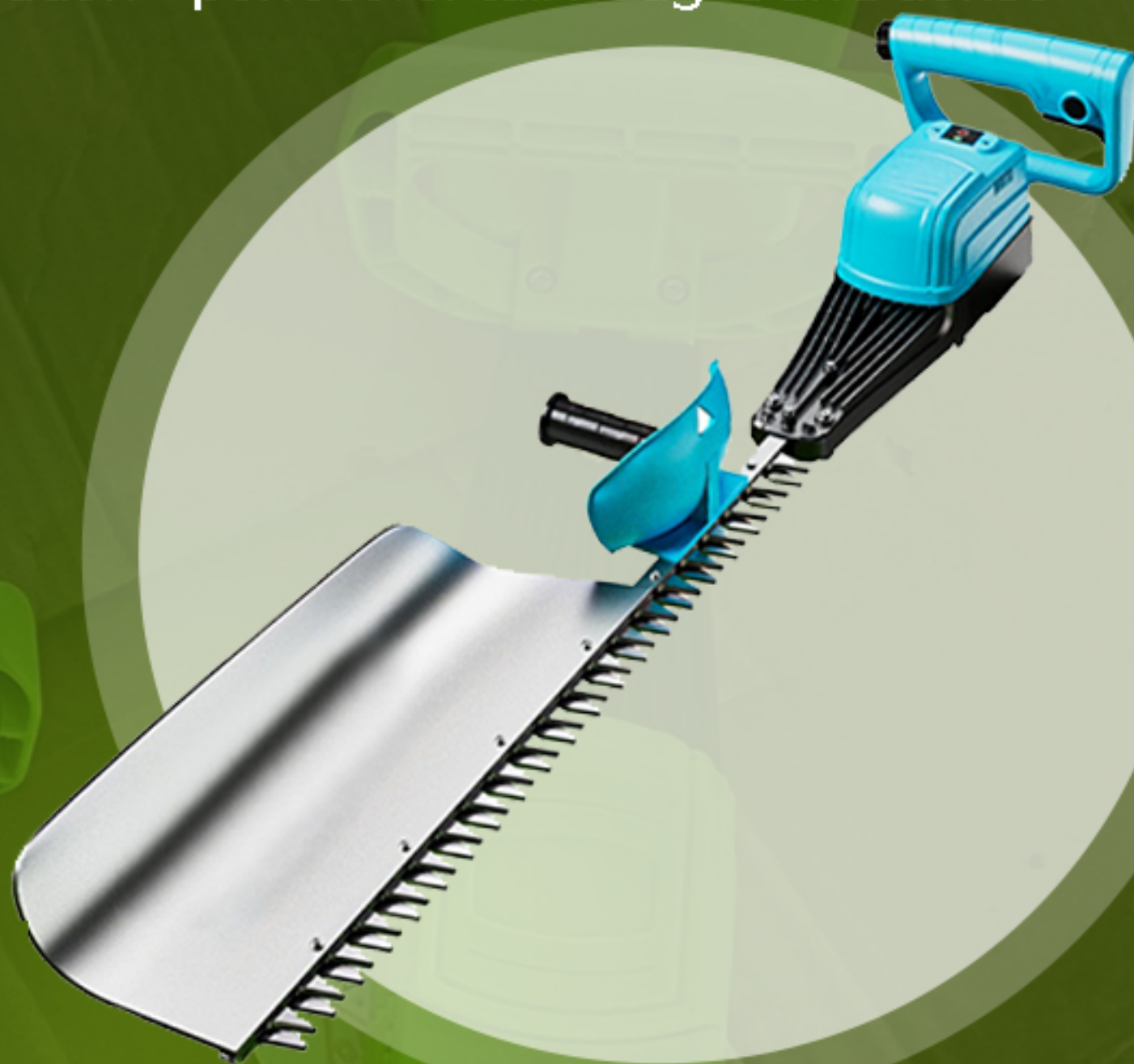
Runtime up to 8 h | charge
time 2 – 8 h

Adjustable handle | flexible
angles for comfort

Five color options



The perfect blend of reach, comfort, and endurance—tailored for export markets that value durability and design.



Visit Our Website

www.belltowercn.com



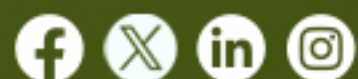
CONTACT US



Call for product details

+86 182 2087 1721

FOLLOW US NOW



Curved Hedge Trimmer 750 mm

Bell-007-HT

MOQ 100 , 500 , 1000 . Lead time 40 days

Shape hedges with style.

The Bell-007-HT Curved Trimmer brings a natural cutting motion with its curved 750 mm blade and 24 V / 48 V brushless motor. Designed for ergonomic balance and long sessions, it's a favorite for artistic hedge shaping and large-scale maintenance.

Curved 750 mm blade |
smooth natural motion

Brushless motor | strong
torque with low noise

Lightweight 2.85 kg |
comfortable for hours of work

Multi-angle handle | precision
in every cut

Up to 9 h runtime | charges in
2 – 8 h

Combining comfort, performance, and visual appeal—an excellent upsell for global buyers seeking unique hedge-trimming solutions.



Visit Our Website

www.belltowercn.com



CONTACT US



Call for product details

+86 182 2087 1721